

### **3.3 Detailed explanation about types of *Jivas*.**

Early in the morning, since we get up, we come across several types of *Jivas* (the living beings). They are big and small. We see a cow, a dog, a cat, animal, birds, human beings etc. Is it an existence only of this much living beings? You see a great variety of marine lives. There are also human beings of different kinds in different regions. The world of animals and birds is also not small. How to make a list of these living beings? How many total lives exist in this wonder world? There are lives which can be seen. Some living beings can be understood, whereas some are mysterious- not easily understood. How to count them? However Jainism has in its special way considered all these issues very thoroughly. They have given a deep thought to it. How many lives? How many souls? Jainism has perhaps a best reply to this quest of knowledge.

In *Agama* scripture of *Vishesh Avashyak Bhashya* as well as in *Jivvichar Sutra*, a very detailed note along with their shapes, types of various living beings is given. If we have an idea about this, both our knowledge and our respect for Jainism will increase. All the living beings stay in 14 *Rajju Loka* both internally and externally. These *Jivas* have been packed and dumped in 14 *Rajju Loka*. The 14 *Rajju Loka* has been divided into three divisions.

(1) The Upper *Loka*. (2) The Lower *Loka* and (3) *Tirchha Loka* or habitation for human animals etc. The total types of *Jivas* are 563. We have been observing various living and non-living beings. Anybody will be eager to know about them let us then start knowing without *Jiva*.

### **What is a *Jiva*? What are its characteristics?**

*Jiva* or soul is one which keeps the *Pran* life. It is distinct from consciousness. *Jiva* is something living, which by itself only, with application of one's own mind, can move here and there one which can feel cold, warm and such other feelings. This is *Jiva* the inner characteristic of *Jiva* is Right knowledge, Right vision, Right conduct, inner strength, penance and discretion. The five senses are externally seen *Pran*, whereas Right knowledge, Right vision and Right conduct are internal *Pran*.

**Types of Jiva :** in *Thanag Sutra*, the names of five *Sthavar* as have been given as under:

1. *Indrasthavarkay*
2. *Brahmasthavarkay*
3. *Shilpsthavarkay*
4. *Sammatisthavarkay*
5. *Prajapatisthavarkay*

It seems *Indra, Brahma* etc. have been considered as Masters or God of each kind of *Sthavarkay*.

In Zoology, the animals have been categorised as mammals, those having wings, those laying eggs etc. This is rather incomplete way of describing instead in Jainism these categories have been shown from various dimensions and subdivisions.

Basically Jiva have two types:

**Liberated and Non-liberated**

- (1) **Liberated :** Liberated *Jivas* are those, who are totally free from birth and rebirth. They have attained *Moksha* and have been totally free from all *Karmas*, and have become *Siddha* and have reached *Siddha Sheela*. And they have permanently settled there.
- (2) **Non-liberated – Sthavar :** They have yet to take birth and rebirth repeatedly from, this specie to that specie according to his *Karma*. Until they get liberation and be free from all *Karmas*, they will have to move from one *Gati* to another one. They have also two types. ***Tras* and *Sthavar*.**

- (1) ***Tras* :** *Tras Jivas* are those who can move at their own will, according to requirements. E.g. Human, Animal Insects etc.

*Tras Jiva* have also 3 categories ***Teukaya, Vaukaya*** and **bigger** even gender wise they are divided in 3 categories like **Male, Female** and **third gender**.

- (2) ***Sthavar* :** *Sthavar* are those which cannot move on e.g. Stone, Tree, Water. There are further 3 division. ***Prithvikaya, Upkaya and Vanaspatikaya***

1. **Sansari (non-liberated)** have also 4 categories according to their species: *Narak* (Hell), *Tiryanch* (Animal), *Manushya* (Human), *Dev* (God).
2. **Sansari Jiva according to senses**, they have 5 categories – One sense, Two sense, Three sense, four sense, five sense.
3. **Sansari Jiva as per body** they have 6 categories *Prithvikaya*, *Upkaya*, *Teukaya*, *Vaukaya*, *Vanaspatikaya* and *Traskaya*.
4. **Sansari Jiva as per species** they have 7 types: Hellish, Animals, Animals(Female), Human, Human (Female) God, Goddess.
5. **Sansari Jiva as per the duration and differences after the birth** there are further 8 categories: *Narak*, *Tiryanch*, Humans and Gods.
6. **Sansari Jiva** 9 types: *Prithvikaya*, *Upkaya*, *Teukaya*, *Vaukaya*, *Vanaspatikaya*, two sense, Three sense, Four sense, Five Sense.
7. **Sansari Jiva as per the birth and difference after birth** 10 types: One sense, Two sense, Three sense, Four sense, Five sense,

Some learned *Acharyas* have indicated the different types of *Jivas* as under:

1. **Two types :**
  - i. *Siddha* and Householder
  - ii. Those with senses and without senses.
  - iii. Those with body and without body.
  - iv. Those with *Yogas* and without *Yogas*
  - v. Those with Sex and without sex (*Veda*)
  - vi. Those with particular mind set and without such mind set.
  - vii. Those with knowledge and without knowledge.
  - viii. Those taking food and without taking food.
  - ix. Those with form and shape and without those.
2. **Three types:**
  - i. **Right Vision, Wrong Vision, Mixed Vision.**
  - ii. *Parit* householder, *Aparit* householder and *Noparit* - *Noaparit* house holder
  - iii. *Paryapta*, *Aparyapta* and *No Paryapta*.

- iv. **Internal, External and Neither of it.**
- v. **With knowledge, Without knowledge and Without no not knowledge.**
- vi. ***Tras*** (Having no sensitivity) ***Sthavar*** (Having no sensitivity) and neither of them.

3. **Four types:**

- i. *Yogi* with mind, *Yogi* with speech, *Yogi* with body and *Non Yogi*
- ii. Female, Male Middle sex and No sex.
- iii. One who can see with eyes, One who can see without eyes, One who can see for limited space, One who has an Ultimate complete knowledge.
- iv. *Sanyat*, *Asanyat*, *Nosanyat*, *Noasanyat*.

4. **Five Types :**

- i. Hellish, Animal, Human, God , *Siddha*,
- ii. One with anger, one with pride, One with greed, One with mystery, One without any *Kashaya* (None of above four)

5. **Six Types :**

- i. One with one sense, One with two senses, One with three senses, One with four senses, one with four senses, One with five senses, One who is *Anindriya*.

6. **Seven Types :**

- i. Those who born in Earth, Those who birth in Water, Those who born in Fire, Those who born in Air, Those who born in Vegetables, Those who born in Cow dung etc. Those born without body.

7. **Eight Types :**

- i. Hellish, Animal, Animal (Female), Human, Human (Female), God, Goddess, and *Siddha*.
- ii. Having knowledge by learning, Having knowledge by listening, Having knowledge by limited spare/time/space. Having knowledge of mind, Having permanent, ultimate knowledge.

8. **Nine Types :**

- i. Those win one sense, Those win two sense, Those win Three sense, Those win four senses, Hellish, Animal, Human, God, *Siddha*.

9. **Ten Types :**

- i. Earth, Air, Fire, Water, Vegetables, Two-sense, Three sense, four sense, five sense, Without any sense.

10. **Twenty four Types :**

- i. **One** Hellish, *Ashurkumar* etc. **Ten** *Bhavanpati*, **Five** *Sthavar*, **Three** *Vikalendriya*, **One** Animal, **One** Human, **One** *Vyantar* Gods, **One** *Jyotisi* Gods, **One** *Vaimanik* Gods all together 24 Types of *Jiva*.

11. **Thirty two Types :**

- i. **Twenty Two** One sensed, **Six** *Vikalendriya*, **One** Hell, **One** Animal, **One** Human, **One** God, all together Thirty two types of *Jiva*

Those are still many sub divisions from various angles **Total divisions of Jivas are 563.**

## 563 divisions of *Jiva*



## 22 divisions of one sensed.

Born from Earth, Water, Fire, Air and Vegetables.

In *Vanaspatikaya* (born of Vegetables) there are two types;

- i. *Pratyekvanaspatikaya* and
- ii. *Sadharanavanaspatikaya*.

In *Pratyekvanaspatikaya*, there is one soul in one body e.g. leaf, fruit, flower, root etc.

In *Sadharanavanaspatikaya* there are number of souls (*Jivas*) in a single body. They grow again and again even if cut e.g. Potato, Onion, Thorn, *Palakh* vegetables etc. for each *Jiva*, there are 6 *Paryapta*. One who dies after completion of all 6 *Paryapta*, are called *Aparyapta*.

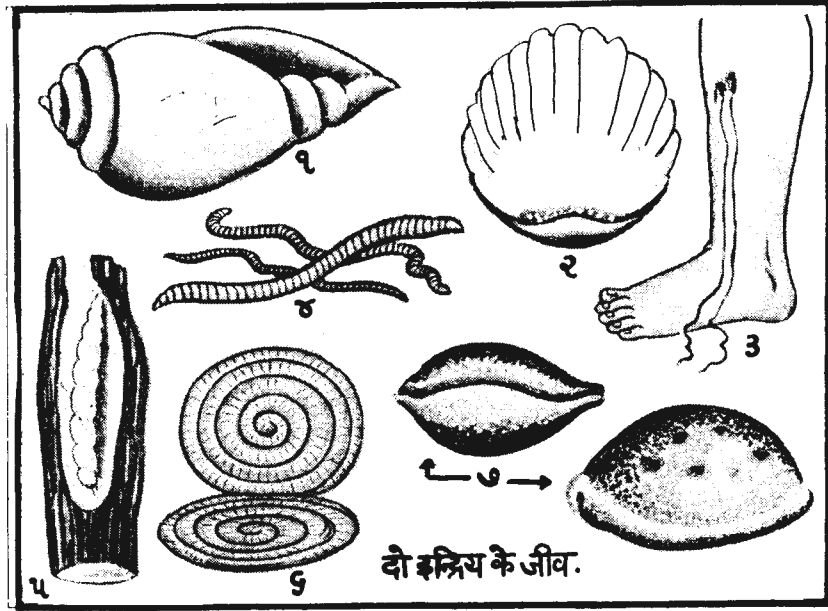
One senses *Jivas* have 22 sub divisions.

	<i>Prithvikaya</i> Born from Earth	<i>Upkaya</i> Born From Water	<i>Teukaya</i> Born from Fire	<i>Vaukaya</i> Born From Air	<i>Pratyek- vanaspatikaya</i>	<i>Sadharana- vanaspatikaya</i>
<i>Sukshma</i>	<i>Aparyapta</i>	<i>Aparyapta</i>	<i>Aparyapta</i>	<i>Aparyapta</i>	-	<i>Aparyapta</i>
<i>Sukshma</i>	<i>Paryapta</i>	<i>Paryapta</i>	<i>Paryapta</i>	<i>Paryapta</i>		<i>Paryapta</i>
<i>Badara</i>	<i>Aparyapta</i>	<i>Aparyapta</i>	<i>Aparyapta</i>	<i>Aparyapta</i>	<i>Aparyapta</i>	<i>Aparyapta</i>
<i>Badara</i>	<i>Paryapta</i>	<i>Paryapta</i>	<i>Paryapta</i>	<i>Paryapta</i>	<i>Paryapta</i>	<i>Paryapta</i>
	4	4	4	4	2	4
<b>Divisions of One sense Jiva</b>					<b>Total</b>	<b>22</b>

## Vikalendriya Jiva (Six divisions)

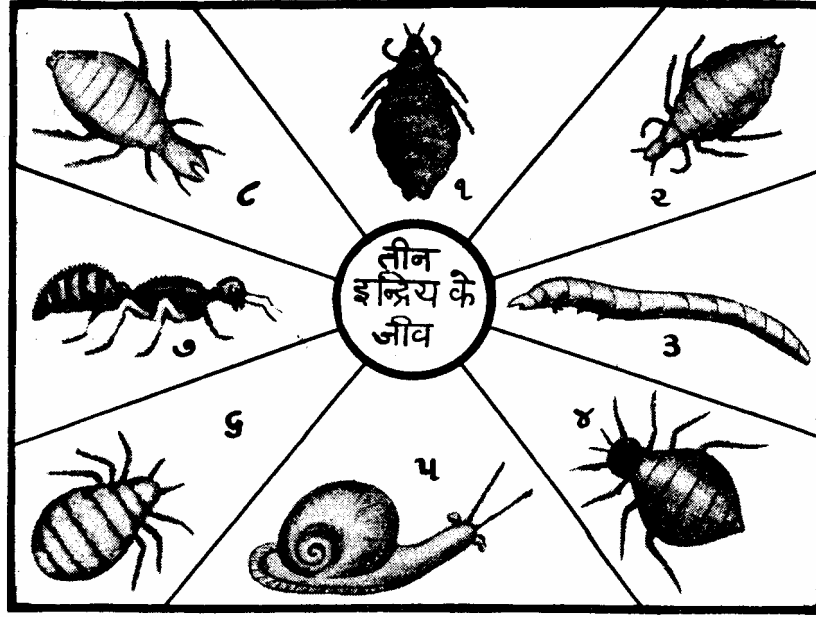
Vikalendriya are those having one sense less.

Those having 2 (Touch and Taste) senses, e.g. Shankha, Koda, Jalo, Alasia etc.



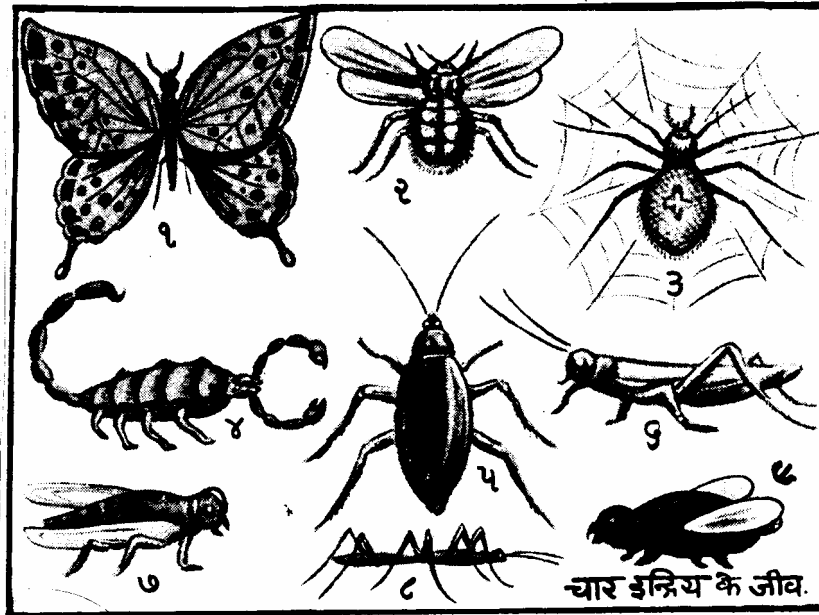
बेईन्द्रिय जिवो : १ शंभ. २ छीप. ३ वाणा. ४ अणसिया. ५ काष्ठकीडो  
६ मामशभूंडा. ७ कोडा-कोडी विगेरे.

Those have three senses: (Touch, Taste and hearing) e.g. Bug, Ant, White ant etc.



तेईन्द्रिय जवो : १ काणी जू. २ घोणी जू. ३ छियण. ४ मांकड. ५ गोकणगाय. ६ गींगोडा. ७ मंकोडा. ८ उधेई विगेरे.

Those having four sense- Touch, Taste, Hearing and vision e.g. Locust, Mosquito, Spider etc.



चउरेन्द्रिय जवो : १ पतंगियुं. २ बगाई. ३ करोणियो. ४ वींछी. ५ वांढे. ६ तीड. ७ माप्पी. ८ मख्खर. ९ लमरो विगेरे.

Two sense	Three sense	Four sense.
<i>Paryapta</i>	<i>Paryapta</i>	<i>Paryapta</i>
<i>Aparyapta</i>	<i>Aparyapta</i>	<i>Aparyapta</i>
2	2	2
<i>Total</i>		6

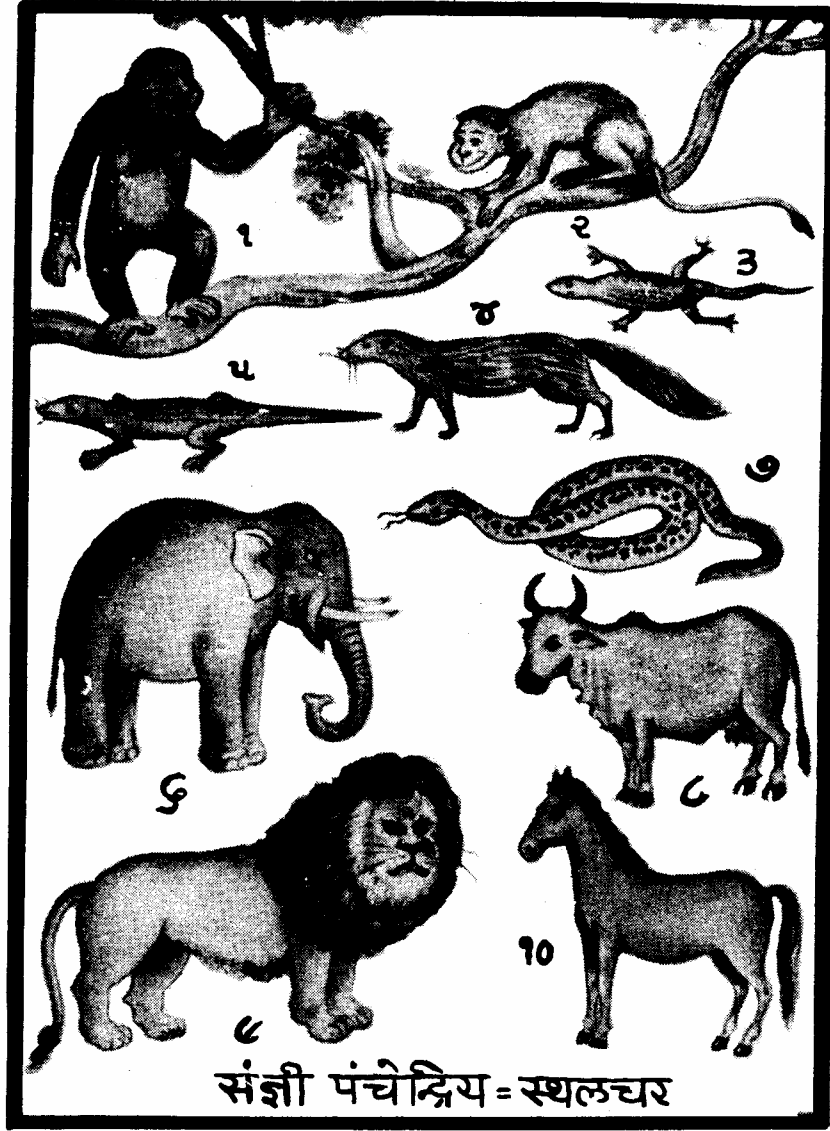
**Tiryanch (Animals) with five sense. (20 divisions)**

**Jalchara Jiva** : Those who live in water.



(१) संज्ञी पंचेन्द्रिय जलचर प्राणीओ : १ मगर. २ टेंडकी. ३ माछली. ४ करयलो.  
५ आठपगो. (आहवर्गनुं अेक प्राणी) ६ सील. ७ कायबो. ८ व्हेल विगेरे.  
१४

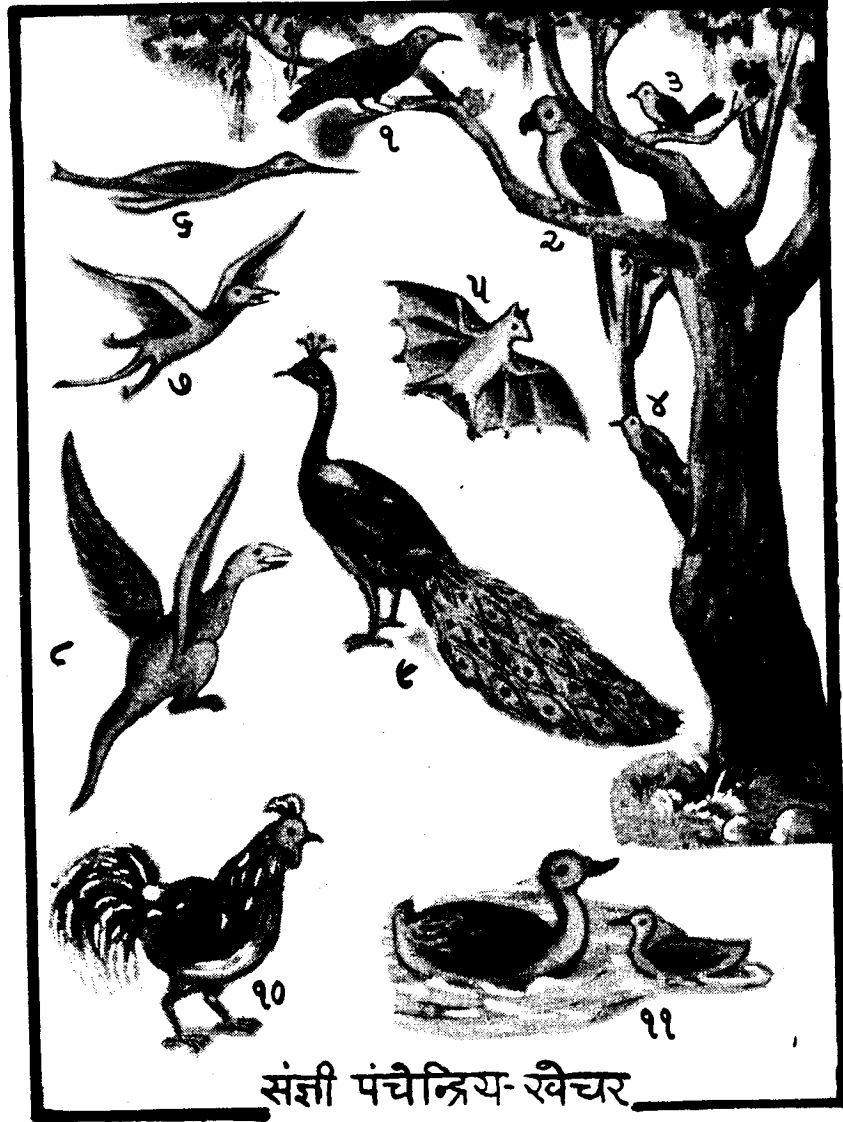
**Sthalchara Jiva** : Those who live on the earth. Walking with four legs like Monkey, Walking with their stomach like Snake , Walking with their hands like Lion, Cow etc.



(૨) સંજ્ઞી પંચેન્દ્રિય સ્થલચર પ્રાણીઓ ત્રણ પ્રકારે છે.

- |              |   |            |           |         |
|--------------|---|------------|-----------|---------|
| ★ ભૂજપરિસર્પ | - | (૧) ગોરિલો | (૨) વાનર  |         |
| ★ ઉરપરિસર્પ  | - | (૩) ગરોળા  | (૫) ઘો    | (૭) સાપ |
| ★ ચતુષ્પદ    | - | (૪) નોખિયો | (૬) હાથી  | (૮) ગાય |
|              |   | (૯) સિંહ   | (૧૦) ઘોડો |         |

**Khechara Jiva** : Those live in the sky i.e. fly in the sky like Crow, Sparrow, Cock etc.



(૩) સંજી પંચેન્દ્રિય ખેચર પક્ષીઓ :

- રોમજ પક્ષીઓ : (૧) કાગડો (૨) પોપટ (૩) ચકલી (૪) કોયલ  
 (૮) મોર (૧૦) કુકડો (૧૧) બતક.  
 ચર્મજ પક્ષીઓ : (૫) ચામાચીડીયું (૬) બીડેલી પાંખવાળા  
 (૭-૮) ઉઘાડી પાંખવાળા છે.  
 (૬-૭-૮) પક્ષીઓ અઢીદિપની બહાર હોય છે.

	<i>Jalchara Jiva</i>	<i>Sthalchara</i>	<i>Sthalchara</i>	<i>Sthalchara</i>	<i>Khechara</i>
		<i>Jiva : Four</i>	<i>Jiva</i>	<i>Jiva : waking</i>	<i>Jiva :</i>
		<i>legs</i>	<i>walking with</i>	<i>from stomach</i>	

			<i>hands.</i>		
<i>Garbhaja</i>	<i>Paryapta</i>	<i>Paryapta</i>	<i>Paryapta</i>	<i>Paryapta</i>	<i>Paryapta</i>
<i>Garbhaja</i>	<i>Aparyapta</i>	<i>Aparyapta</i>	<i>Aparyapta</i>	<i>Aparyapta</i>	<i>Aparyapta</i>
<i>Samurchhima</i>	<i>Paryapta</i>	<i>Paryapta</i>	<i>Paryapta</i>	<i>Paryapta</i>	<i>Paryapta</i>
<i>Samurchhima</i>	<i>Aparyapta</i>	<i>Aparyapta</i>	<i>Aparyapta</i>	<i>Aparyapta</i>	<i>Aparyapta</i>
	<b>4</b>	<b>4</b>	<b>4</b>	<b>4</b>	<b>4</b>
				<i>Total</i>	<i>20</i>

### Hellish (14 Divisions)

<b>Ratna prabha</b>	<b>Sharkara prabha</b>	<b>Vasuka pabha</b>	<b>Pank prabha</b>	<b>Dhum prabha</b>	<b>Mama prabha</b>	<b>Tamastamas pabha</b>
<i>Paryapta</i>	<i>Paryapta</i>	<i>Paryapta</i>	<i>Paryapta</i>	<i>Paryapta</i>	<i>Paryapta</i>	<i>Paryapta</i>
<i>Aparyapta</i>	<i>Aparyapta</i>	<i>Aparyapta</i>	<i>Aparyapta</i>	<i>Aparyapta</i>	<i>Aparyapta</i>	<i>Aparyapta</i>
2	2	2	2	2	2	2
					<b>Total</b>	<b>14</b>

### Human 303 divisions.

- 15 of *Karmabhoomi* (5 *Bharat Kshetra* + 5 *Airavat Kshetra* + 5 *Mahavideh Kshetra*)  
30 of *Akarmabhoomi* ( 5 *Himvant Kshetra* + 5 *Hiranyavat Kshetra* + 5 *Harivant Kshetra* + 5 *Ramyaka Kshetra* + 5 *Devkuru* + 5 *Uttarakuru*).  
56 *Antar Dwip* ( 7 *Dwips* each on 8 *Sheekha* in *Lavan* ocean)  
**101 Total**

- 101 Born out of womb *Paryapta*.  
101 Born out of womb *Aparyapta*.  
101 Born out of Exreta etc.  
**303 Total Divisions in Human**

### Dev (God) :

<i>Bhavanpati Gods</i>	10 <i>Asurkumara</i> etc.	10
	15 <i>Parmagati Amb, Ambrish</i> etc.	15

<i>Vyantar Gods</i>	8 Ghost, <i>Pishach</i> etc.	8
	<i>Vakavyantara Gods</i>	8
	<i>Tiryank Mrubhak</i> etc.	10
<i>Jyotishi Gods</i>	Sun, Moon, Stars etc.(Within Jambu Dwip	05
	Sun, Moon, Stars etc.(Outside Jambu Dwip	05
<i>Vaimanik Gods</i>	<i>Dev Loka Saudharma</i> etc.	12
	<i>Graivya Sudarshan</i> etc.	09
	<i>Lokantik Aditya</i> etc.	09
	<i>Anuttar Jayant, Vijayant</i> etc.	05
	<i>Thillishiya</i>	03
	<b>Total</b>	<b>99</b>

**99 Paryapta + 99 Aparyapta = 198 divisions.**

### Summary

One sense	022
Vikalendriya	006
Tiryanch Panchendriya	020
Hellish	014
Human	303
Gods	198
<b>Total</b>	<b>563.</b>

### Explanation about some technical words.

<i>Sukshma</i> :	Subtle, cannot be seen by naked eyes.
<i>Badara</i> :	External, can be seen by normal vision.
<i>Samurchhima</i> :	Those born from excreta, cow dung, soling etc.
<i>Garbhaja</i> :	Born out of womb/etc.
<i>Paryapta</i> :	One who takes adequate food, breath etc before one's birth.
<i>Aparyapta</i> :	One who dies before adequate kind of things.
<i>Karmabhoomi</i> :	Where some or other work is to be done like Agriculture, industry etc.
<i>Akarmabhoomi</i> :	Where no work is to be done, <i>Kalpavruksha</i> Divine tree provides all that one wants / Wishes.

## Classification of 563 Divisions of Jiva

<i>Place</i>	<i>Division of Jiva</i>				
	<i>Naraki</i> (Hellish)	<i>Tiryanch</i> (Animal)	<i>Human</i> 103	<i>God</i> 198	<i>Total</i> 563
	14	48			

<i>Bharat Kshetra</i>	00	48	<sup>5</sup> 003	00	051
<i>Mahavideh Kshetra</i>	00	48	<sup>5</sup> 003	00	051
<i>Jambu Dwip</i>	00	48	<sup>6</sup> 027	00	075
<i>Lavan ocean</i>	00	48	<sup>8</sup> 168	00	216
<i>Dhatki Khanda</i>	00	48	<sup>7</sup> 054	00	102
<i>Kalodadhi ocean</i>	00	48	000	00	048
<i>Ardha Puskar Dwip</i>	00	48	<sup>5</sup> 004	00	102
<i>Lower Loka</i>	14	48	<sup>5</sup> 003	<sup>8</sup> 50	115
<i>Nandishwar Dwip</i>	00	<sup>1</sup> 46	000	00	046
<i>Nandishwar ocean</i>	00	<sup>1</sup> 46	000	00	046
<i>Tirchha Loka</i>	00	48	303	<sup>9</sup> 72	423
<i>Upper Loka</i>	00	48	000	76	124
<i>Meru mountain</i>	00	48	000	00	048
<i>2 ½ Dwip (Adhi Dwip)</i>	00	48	303	00	351
<i>12 Dev Loka</i>	00	<sup>2</sup> 20	000	48	068
<i>9 Graveyak</i>	00	<sup>3</sup> 14	000	18	032
<i>At the end of Loka</i>	00	<sup>4</sup> 12	000	00	012
<i>Lowergrama</i>	00	48	303	00	051
<i>In the handful.</i>	00	<sup>4</sup> 12	000	00	012